

## 1 Before You Begin

**WARNING:** Before you set up and operate your Dell PowerVault system, review the safety instructions that shipped with your system.

**Dell Software License Agreement**

- Before using your system, read the Dell Software License Agreement that came with the system.
- You must consider any CD, DVD, or diskette set of Dell installed software as BACKUP copies of the software installed on your system's hard drive.
- If you do not accept the terms of the agreement, please call the customer assistance telephone number. For customers in the United States, call 800-WWW-DELL (800-999-3355). For customers outside the United States, visit [dell.com/contactdell](http://dell.com/contactdell) and select your country or region from the page.

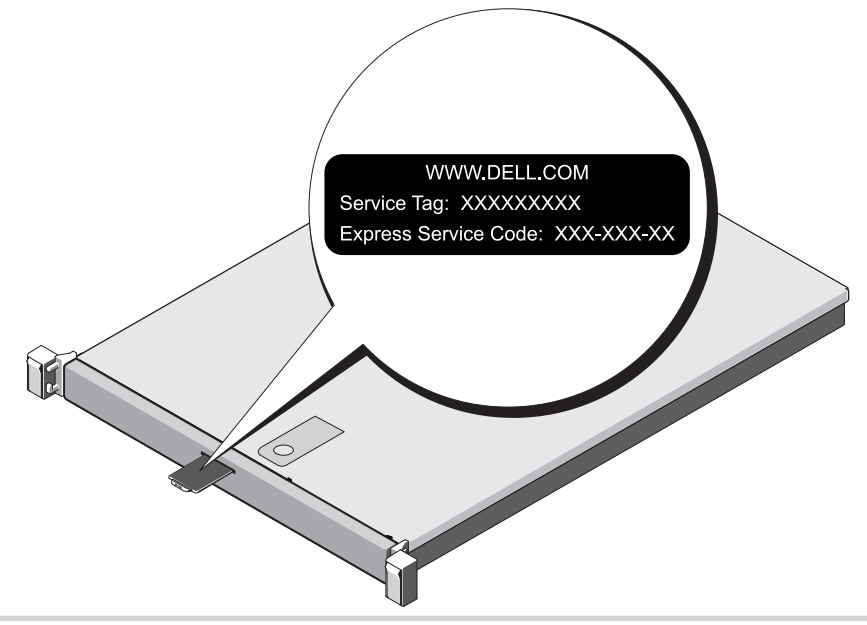
**Verifying Package Contents**  
Verify that all components listed on your packing slip are available. Save all documentation and accessories.

**Installing the System in a Rack**  
This system requires a properly grounded electrical outlet, a compatible rack, and a rack installation kit. For more information, see the section **Additional Information**.

**Locating Your System Service Tag**  
Your system is identified by a unique Express Service Code and Service Tag. Your Service Tag is a unique five- or seven-digit alphanumeric (letter and number) code, which is found on a white bar-coded label affixed to your Dell system. An Express Service Code is a numeric conversion of a Service Tag. The Express Service Code and Service Tag can be found by pulling out the information tag located at the front of your system.

**Note:** This information is used by Dell to route support calls to the appropriate personnel.

**Note:** The illustrations in this document are not intended to represent a specific network attached storage (NAS) system.

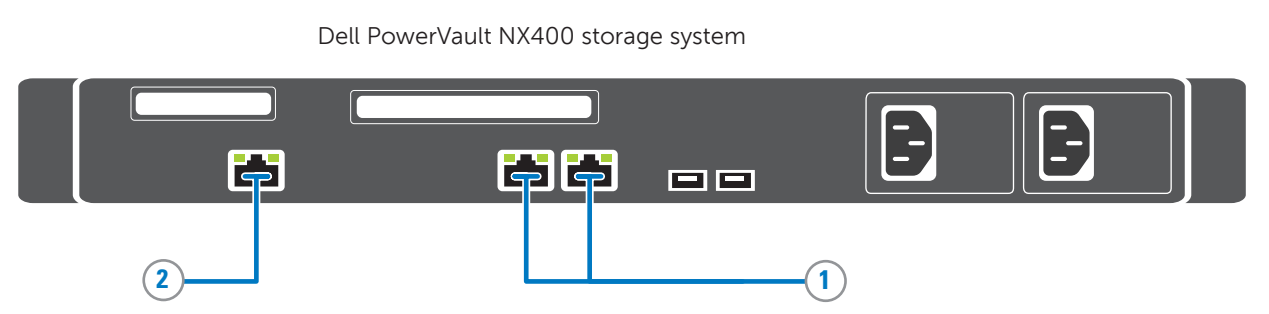


**Default Password**  
The default password for the NAS system is **Stor@ge!**

**Default System Name**  
Your system is configured with a default system name of D<ServiceTag>, where <ServiceTag> is your System Service tag. To locate the Service Tag of your system, see the section **Locating Your System Service Tag**.

**Check for documentation and information updates on [dell.com/support/manuals](http://dell.com/support/manuals).  
Always read the updates first because they often supersede information in other documents.**

## 2 Cabling the System Using iSCSI



- 1 Gb1 and Gb2 to Ethernet switch
- 2 iDRAC Enterprise port to Ethernet switch for lights-out management (optional)

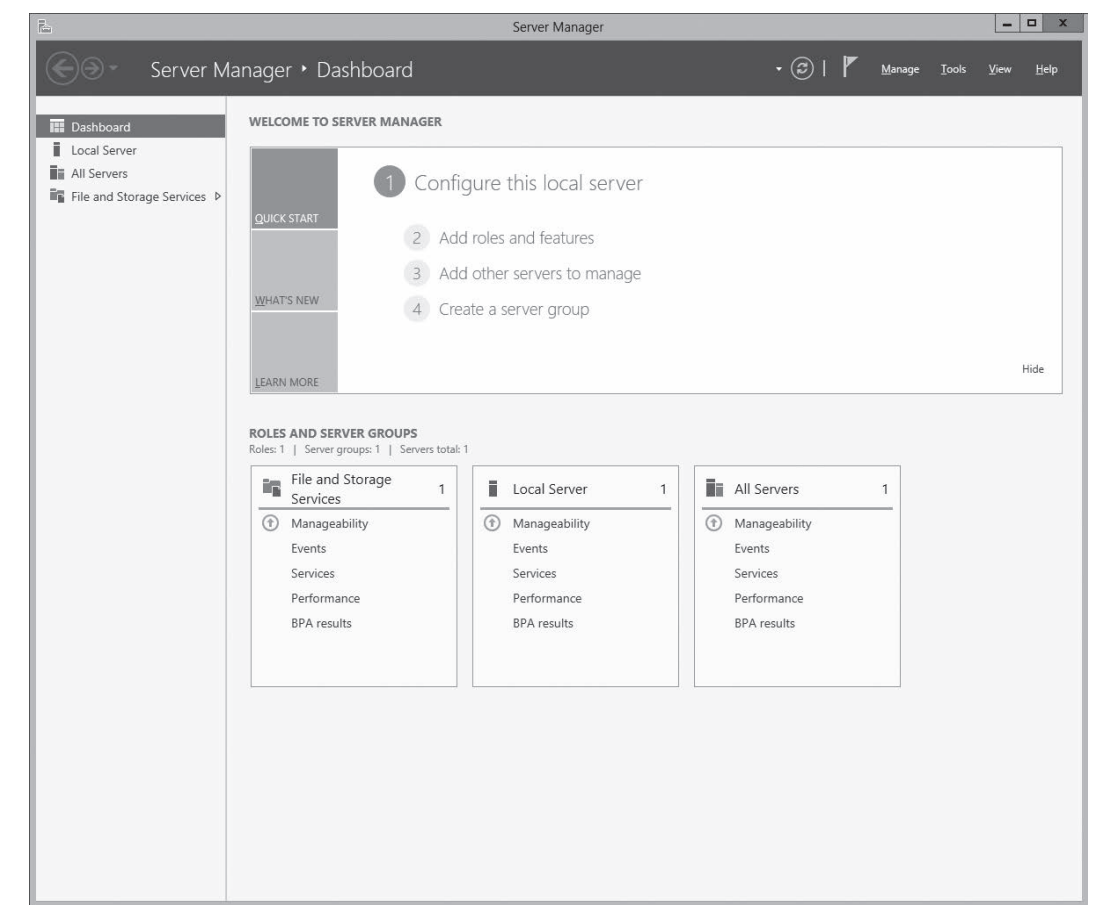
## 3 Powering-Up and Managing Your NAS System

**Powering-Up Your NAS**  
Turn on the storage arrays and additional expansion enclosure(s), if any. After the storage arrays and enclosure(s) are initialized, turn on the PowerVault NX400 NAS system.

**Managing Your NAS**  
To manage your NAS locally, connect a keyboard, monitor, and mouse directly to the NAS system.  
To manage your NAS remotely, you can use:

- iDRAC  
**Note:** For information about initial setup, configuration, and console redirection using iDRAC, see the *Integrated Dell Remote Access Controller 7 User's Guide* at [dell.com/openmanagemanuals](http://dell.com/openmanagemanuals).
- Remote Desktop  
**Note:** For more information on Remote Desktop, see the section **Launching Remote Desktop**.

## 4 Initial Configuration



1. When you start your NAS system running Windows Storage Server 2012 for the first time, press **OK** on the **Default Password** screen.

**Note:** Before changing the password, ensure that you change the system language according to your preference.

2. To change the default language, navigate to **C:\Dell\_OEM\MUI**, and run the appropriate language batch file.  
Follow the prompts to install your preferred language.

3. To change your administrator password, press **<Ctrl><Alt><Del>** and click **Change a Password**.

**Server Manager** starts automatically the first time you log on. In **Server Manager**, click **Configure this local server** to:

- Change the computer name
- Specify the domain
- Check for latest Windows updates
- Specify the time zone
- Configure remote desktop

Click on the bottom left corner of the screen to get to the **Start** screen to navigate to a particular application.

### Launching Remote Desktop

If Dynamic Host Configuration Protocol (DHCP) and Domain Name System (DNS) are implemented on your network, your system automatically configures the network settings. You can launch Remote Desktop from a client and remotely access the NAS system using the default system name.

For example, in the **Remote Desktop Connection** window, type **D<ServiceTag>**, where **<ServiceTag>** is your system Service Tag and click **Connect**. To locate the Service Tag of your system, see the section **Locating Your System Service Tag**. The default password for the NAS system is **Stor@ge!**

## 5 Additional Information

### Documentation

To check for the documentation for your Dell PowerVault NAS system, go to [dell.com/support/manuals](http://dell.com/support/manuals) and enter the Service Tag of your system. To locate the Service Tag of your system, see the section **Locating Your System Service Tag**. The following documents are available for your PowerVault NAS system.

Title	Description
Getting Started Guide	Provides an overview of system features, setting up your solution, and technical specifications.
Owner's Manual	Provides information about solution features and describes how to troubleshoot the system and install or replace system components.
Rack Installation Instructions	Describes how to install your system into a rack. This document is also shipped with your rack solution.
Administrator's Guide	Provides information about configuring and managing the system.
Troubleshooting Guide	Provides information about troubleshooting the software and the system.
Server Administrator Storage Management User's Guide	Discusses installing, configuring, and using Dell OpenManage Server Administrator software to manage your PowerVault NAS system.  <b>Note:</b> For the <i>Server Administrator Storage Management User's Guide</i> and other related Dell OpenManage documentation, see <a href="http://dell.com/openmanagemanuals">dell.com/openmanagemanuals</a> .

### Documentation Feedback

If you have any feedback for this document, write to [documentation\\_feedback@dell.com](mailto:documentation_feedback@dell.com). Alternatively, you can use the Feedback link at the top right corner of your documentation web page.